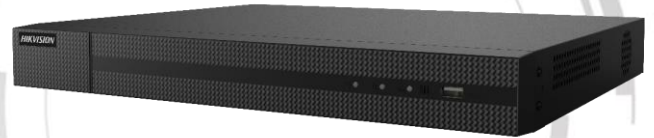


### HWD-6232MH-G4 TURBO HD DVR

#### Key Features

- Deep learning-based motion detection 2.0 for all analog channels
- H.265 Pro+/H.265 Pro/H.265 video compression
- HDTVI/AHD/CVI/CVBS/IP video input
- Audio via coaxial cable
- Up to 40-ch IP camera inputs
- Up to 10 TB capacity per HDD



#### Compression and Recording

- H.265 Pro+ can be enabled to improve encoding efficiency and reduce data storage costs
- Full channel recording at up to 4 MP lite resolution

#### Storage and Playback

- 2 SATA interfaces
- Smart search for efficient playback

#### Smart Function

- Support multiple VCA (Video Content Analytics) events for both analog and smart IP cameras
- Support 4-ch line crossing detection and intrusion detection

#### Network & Ethernet Access

- Hik-Connect & DDNS (Dynamic Domain Name System) for easy network management
- Max. 96 Mbps incoming bandwidth and output bandwidth limit configurable



## Specification

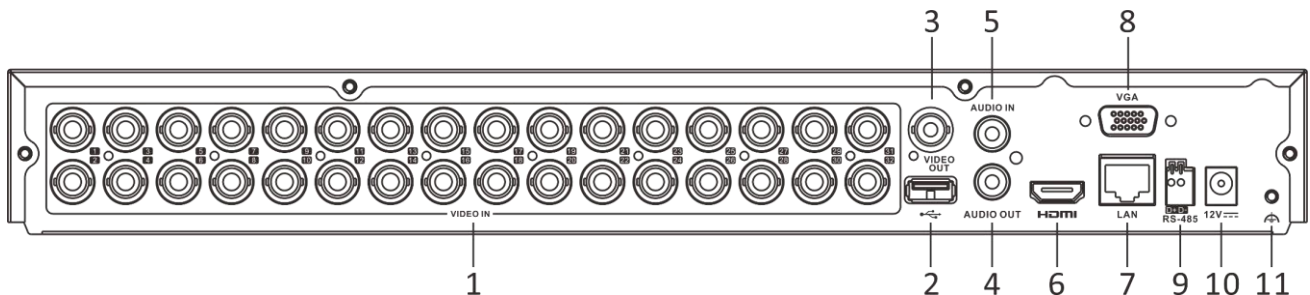
|                                   |   |
|-----------------------------------|---|
| <b>Model</b>                      | <b>HWD-6232MH-G4</b>  |
| <b>Motion Detection 2.0</b>       |   |
| <b>Human/Vehicle Analysis</b>     | Deep learning-based motion detection 2.0 is enabled by default for all analog channels, it can classify human and vehicle, and extremely reduce false alarms caused by objects like leaves and lights;<br>Quick search by object or event type is supported;  |
| <b>Recording</b>                  |   |
| <b>Video compression</b>          | H.265 Pro+/H.265 Pro/H.265/H.264+/H.264   |
| <b>Encoding resolution</b>        | When 1080p lite mode is not enabled:<br>4 MP lite/1080p/720p/VGA/WD1/4CIF/CIF<br>When 1080p lite mode is enabled:<br>4 MP lite/3 MP/1080p lite/720p lite/VGA/WD1/4CIF/CIF   |
| <b>Frame rate</b>                 | Main stream:<br>When 1080p Lite mode is not enabled:<br>4 MP lite/1080p@15 fps; 720p/VGA/WD1/4CIF/CIF@25 fps (P)/30 fps (N)<br>When 1080p Lite mode is enabled:<br>4 MP lite@15 fps; 1080p lite/720p lite/VGA/WD1/4CIF/CIF@25 fps (P)/30 fps (N)<br>Sub-stream:<br>WD1/4CIF@12 fps; CIF@25 fps (P)/30 fps (N) |
| <b>Video bit rate</b>             | 32 Kbps to 6 Mbps   |
| <b>Dual stream</b>                | Support   |
| <b>Stream type</b>                | Video, Video & Audio  |
| <b>Audio compression</b>          | G.711u  |
| <b>Audio bit rate</b>             | 64 Kbps   |
| <b>Video and Audio</b>            |   |
| <b>IP video input<sup>2</sup></b> | 2-ch (up to 34-ch)<br><br>Enhanced IP mode on:<br>8-ch (up to 40-ch), each up to 4 Mbps<br>Up to 6 MP resolution<br>Support H.265+/H.265/H.264+/H.264 IP cameras  |
| <b>Analog video input</b>         | 32-ch<br>BNC interface (1.0 Vp-p, 75 Ω), supporting coaxitron connection  |
| <b>HDTVI input</b>                | 3K@20 fps, 4 MP@30 fps, 4 MP@25 fps, 1080p@30 fps, 1080p@25 fps, 720p@60 fps, 720p@50 fps, 720p@30 fps, 720p@25 fps   |
| <b>AHD input</b>                  | 4 MP@25 fps, 4 MP@30 fps, 1080p@25 fps, 1080p@30 fps, 720p@25 fps, 720p@30 fps  |
| <b>HDCVI input</b>                | 4 MP@25 fps, 4 MP@30 fps, 1080p@25 fps, 1080p@30 fps, 720p@25 fps, 720p@30 fps  |
| <b>CVBS input</b>                 | PAL/NTSC  |
| <b>CVBS output</b>                | 1-ch, BNC (1.0 Vp-p, 75 Ω), resolution: PAL: 704 × 576, NTSC: 704 × 480   |
| <b>VGA output</b>                 | 1-ch, 1920 × 1080/60Hz, 1280 × 1024/60Hz, 1280 × 720/60Hz   |
| <b>HDMI output</b>                | 1-ch, 4K (3840 × 2160)/30Hz, 2K (2560 × 1440)/60Hz, 1920 × 1080/60Hz, 1280 × 1024/60Hz, 1280 × 720/60Hz, 1024 × 768/60Hz  |

|  |   |
|--|---|
| <b>Video output mode</b>   | HDMI and VGA simultaneous output  |
| <b>Audio input</b>   | 1-ch, RCA (2.0 Vp-p, 1 K $\Omega$ )   |
|  | 32-ch via coaxial cable   |
| <b>Audio output</b>  | 1-ch, RCA (Linear, 1 K $\Omega$ )   |
| <b>Two-way audio</b>   | 1-ch, RCA (2.0 Vp-p, 1 K $\Omega$ ) (using the first audio input)                       |
| <b>Synchronous playback</b>                                      | 16-ch   |
| <b>Network</b>   |   |
| <b>Total bandwidth</b>   | 128 Mbps  |
| <b>Incoming bandwidth (Enhanced IP mode)</b>                     | 96 Mbps   |
| <b>Remote connection</b>   | 128   |
| <b>Network protocol</b>  | TCP/IP, PPPoE, DHCP, Hik-Connect, DNS, DDNS, NTP, SADP, NFS, iSCSI, UPnP™, HTTPS, ONVIF |
| <b>Network interface</b>   | 1, RJ45 10M/100M/1000M self-adaptive Ethernet interface                                 |
| <b>Auxiliary interface</b>                                       |   |
| <b>SATA</b>  | 2 SATA interfaces   |
| <b>Capacity</b>  | Up to 10 TB capacity for each disk  |
| <b>Serial interface</b>  | 1 RS-485 (full-duplex)  |
| <b>USB interface</b>   | Front panel: 1 $\times$ USB 2.0, rear panel: 1 $\times$ USB 3.0                         |
| <b>Alarm in/out</b>  | N/A (optional to support)   |
| <b>General</b>   |   |
| <b>Power supply</b>  | 12 VDC, 3.3 A   |
| <b>Consumption (without HDD)</b>                                 | $\leq$ 40 W   |
| <b>Working temperature</b>                                       | -10 $^{\circ}$ C to +55 $^{\circ}$ C (+14 $^{\circ}$ F to +131 $^{\circ}$ F)            |
| <b>Working humidity</b>  | 10% to 90%  |
| <b>Dimension (W <math>\times</math> D <math>\times</math> H)</b> | 385 $\times$ 315 $\times$ 52 mm (15.2 $\times$ 12.4 $\times$ 2.0 inch)                  |
| <b>Weight (without HDD)</b>                                      | $\leq$ 2 kg (4.4 lb.)   |

**Note:**

1: Enhanced IP mode might be conflicted with smart events (perimeter protection) or other functions, please refer to the user manual for details.

## Physical Interface



| No. | Description                | No. | Description           |
|-----|----------------------------|-----|-----------------------|
| 1   | Video and Coaxial Audio In | 7   | LAN Network Interface |
| 2   | USB Interface              | 8   | VGA Interface         |
| 3   | VIDEO OUT                  | 9   | RS-485 Interface      |
| 4   | AUDIO OUT, RCA Connector   | 10  | Power Input           |
| 5   | AUDIO IN, RCA Connector    | 11  | GND                   |
| 6   | HDMI Interface             |     |                       |

## Available Model

HWD-6232MH-G4

Distributed by



**HIKVISION**<sup>®</sup>  
HiWatch Series

**Headquarters**  
No.555 Qianmo Road, Binjiang District,  
Hangzhou 310051, China  
T +86-571-8807-5998  
overseasbusiness@hikvision.com

**Hikvision USA**  
T +1-909-895-0400  
sales.usa@hikvision.com

**Hikvision Italy**  
T +39-0438-6902  
info.it@hikvision.com

**Hikvision Singapore**  
T +65-6684-4718  
sg@hikvision.com

**Hikvision Africa**  
T +27 (10) 0351172  
sale.africa@hikvision.com

**Hikvision Europe**  
T +31-23-55-42-770  
info.eu@hikvision.com

**Hikvision France**  
T +33(0)1-85-330-450  
info.fr@hikvision.com

**Hikvision Oceania**  
T +61-2-8599-4233  
salesau@hikvision.com

**Hikvision Hong Kong**  
T +852-2151-1761

**Hikvision Middle East**  
T +971-4-8816086  
salesme@hikvision.com

**Hikvision Spain**  
T +34-91-737-16-55  
info.es@hikvision.com

**Hikvision Canada**  
T +1-909-895-0400  
sales.usa@hikvision.com

**Hikvision Russia**  
T +7-495-669-67-99  
saleru@hikvision.com

**Hikvision Poland**  
T +48-22-460-01-50  
poland@hikvision.com

**Hikvision Korea**  
T +82-31-731-8841  
sales.korea@hikvision.com

**Hikvision India**  
T +91-22-28469900  
sales@pramahikvision.com

**Hikvision UK**  
T +01628-902140  
support.uk@hikvision.com

**Hikvision Brazil**  
T +55 11 3318-0050  
Latam.support@hikvision.com